

**ITEM 17. ROAD WORKS – TEMPORARY ROAD CLOSURES – QUEEN
STREET GLEBE**

TRIM RECORD NO: 2016/456241

RECOMMENDATION

It is recommended that the Committee endorse the temporary road closure of Queen Street, between Bay and Cowper Streets, Glebe, on Wednesday 2 November 2016 from 7am to 5pm, subject to the following conditions:

- (A) The Applicant must comply with the temporary road closure conditions as mentioned in Schedule C of this Agenda.
- (B) The Applicant must comply with any other conditions imposed by City's Construction Regulation Unit.
- (C) The Applicant has indicated Wednesday 16 November 2016 as an additional period for the road works as a contingency for inclement weather.
- (D) The Applicant must contact the Leichhardt Police to obtain a separate police permit and to discuss deployment of user pay police for the road closure.
- (E) The Applicant must provide a telephone number of the supervisor responsible for the proposed closure and include contact details in the notification letters to be distributed to affected stakeholders.

VOTING MEMBERS FOR THIS ITEM

<i>Voting Members</i>	<i>Support</i>	<i>Object</i>
City of Sydney		
Roads and Maritime Services		
NSW Police – Leichhardt LAC		
Representative for the Member for Balmain		

DECISION

BACKGROUND

Rescom Projects have applied for the temporary road closure of Queen Street, between Bay and Cowper Streets, Glebe, on Wednesday 2 November 2016 from 7am to 5pm.

COMMENTS

The proposed temporary road closure is required to facilitate a sewerage connection to 50–54 Cowper Street, Glebe.

The Applicant has provided a site-specific Traffic Control Plan that includes details of barricades, signs, flagmen and other traffic devices to implement the proposed road closure.

There are currently no other approved temporary road closures proposed to take place on the same day in close proximity of this closure.

The temporary road closure will not affect any other properties, as local access will be provided at all times and alternative access routes are available nearby.

A Traffic Management Plan (TMP) for the temporary road closure was approved by Roads and Maritime Services (RMS) on 10 October 2016.

CONSULTATION

The Applicant will be required to notify affected stakeholders as stipulated in Schedule C.

FINANCIAL

All costs associated with the proposed closure will be borne by the Applicant.

ATTACHMENTS

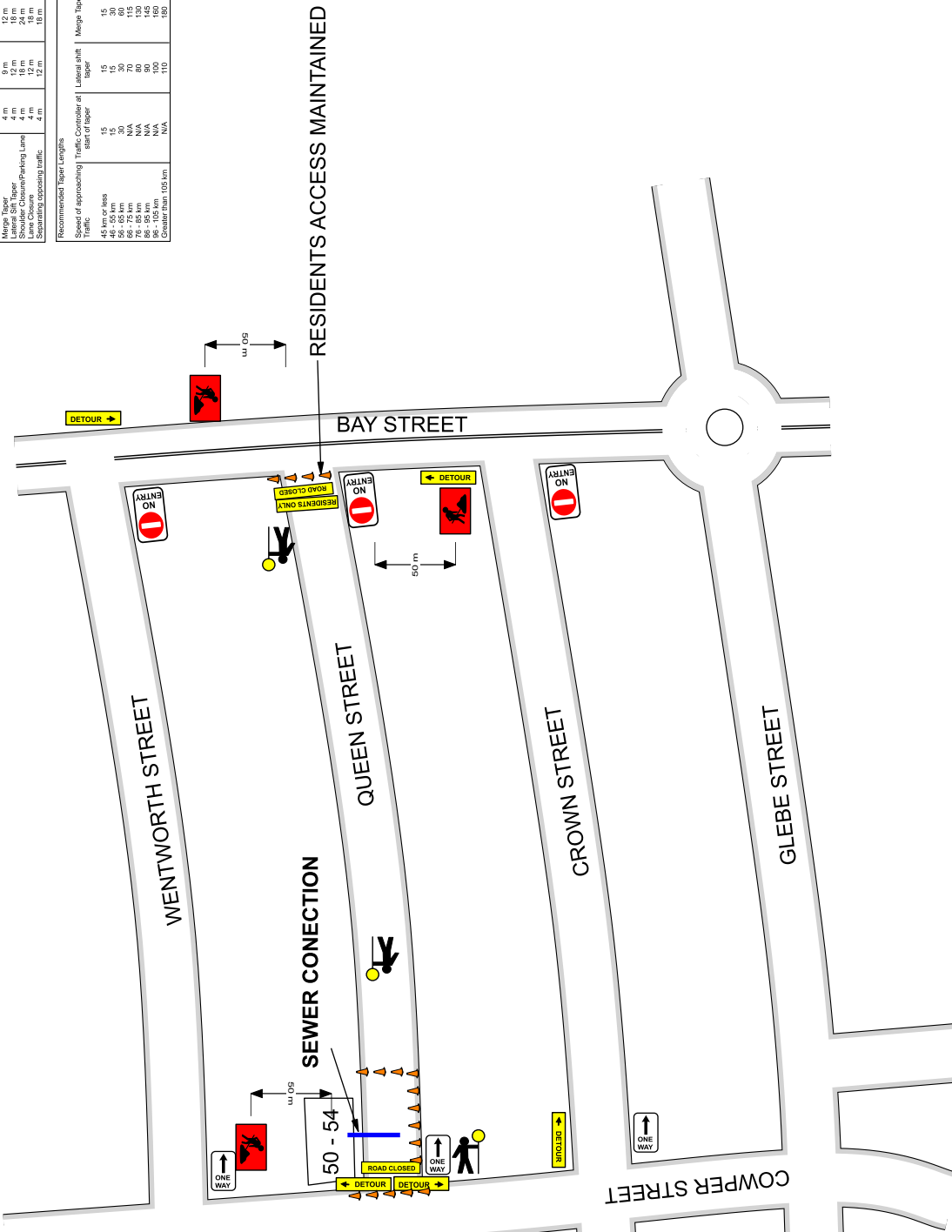
Road Works – Temporary Road Closures – Queen Street Glebe

Sairam Jegatheeswaran, Engineering Traffic Officer

Traffic Control Plan Modification (onsite)
Modified by: Date:
Time: Signed:
RMS Select & Modify Cert #:

Purpose/Usage	Recommended Spacing of Cones/Bollards		
	Less 50 km/h	50 - 70 km/h	above 70 km/h
Merge/Taper	4 m	8 m	12 m
Work Area	4 m	8 m	12 m
Shared Lane Closures	4 m	8 m	12 m
Lane Closure	4 m	8 m	12 m
Staggering opposing traffic	4 m	8 m	12 m

Speed of approaching Traffic	Recommended Taper Lengths		Merge Taper
	start of taper	Lateral shift	
45 km or less	15	15	15
46 - 55 km	15	15	30
56 - 65 km	N/A	70	30
66 - 75 km	N/A	70	115
76 - 85 km	N/A	80	115
86 - 95 km	N/A	90	145
96 - 105 km	N/A	100	160
Greater than 105 km	N/A	110	180



- NOTES:-**
1. Low traffic volume & low speed classified Council road
1 lane 1 way road
 2. Road closure 1 of 1 lanes East bound Boundary Street
 3. Residents access Maintained through Bay & Queen Street
 4. Traffic control devices use and implemented as part of this TCP must meet TCWS manual section 3 and AS 3.2.3
 5. Pedestrians access maintained around works as per TCWS manual section 9.3.1
Safe clearances must be maintained for access from traffic flow
 6. Work area is to be clearly defined with traffic cones, barriers or fencing as per TCWS manual section 9.3.2
 7. Sequence for erection and removal of signs and devices (AS2.5.3) must follow TCWS manual section 3.4.1
 8. TCP must be implemented by a certified and competent person and follow steps set out in TCWS manual section 4.4.1
 9. TCP must only be implemented during approved hours of road authority
 10. The site must be inspected before TCP in is implemented, during operation and pre-closure as per TCWS manual section 6.1.2
 11. Duplication of signs may be required as per TCWS section 3.2.4
 12. The site must be monitored to avoid end of queue collisions (AS4.7.8) as per TCWS manual section 3.5.7
 13. All vehicles entering, exiting or moving within the worksite must operate as per TCWS manual section 7
 14. Any modifications made to this TCP must be noted in box provided

 Roadwork Solutions Pty Ltd 24 Anvil Road Seven Hills 1300 433 093 www.roadworksolutions.com.au	JBH 50 54 COWPER STREET GLEBE Construction UBD REF 12 M 14	 NORTH
	Drawn By Mr Corey McKeough RTA Design & Inspect # 2253016295 26/05/2016 NOT DRAWN TO SCALE	Based on RTA TCP NO. 54 This Traffic Control plan is drawn to meet AS 1742.3 and RTA Traffic Control at Worksites Manual Version 4. and should be implemented accordingly by a RTA qualified person. This plan can be altered by an accredited person with signed & dated changes. They then become responsible for any changes implemented.

